



www.christianconsulting.org.uk

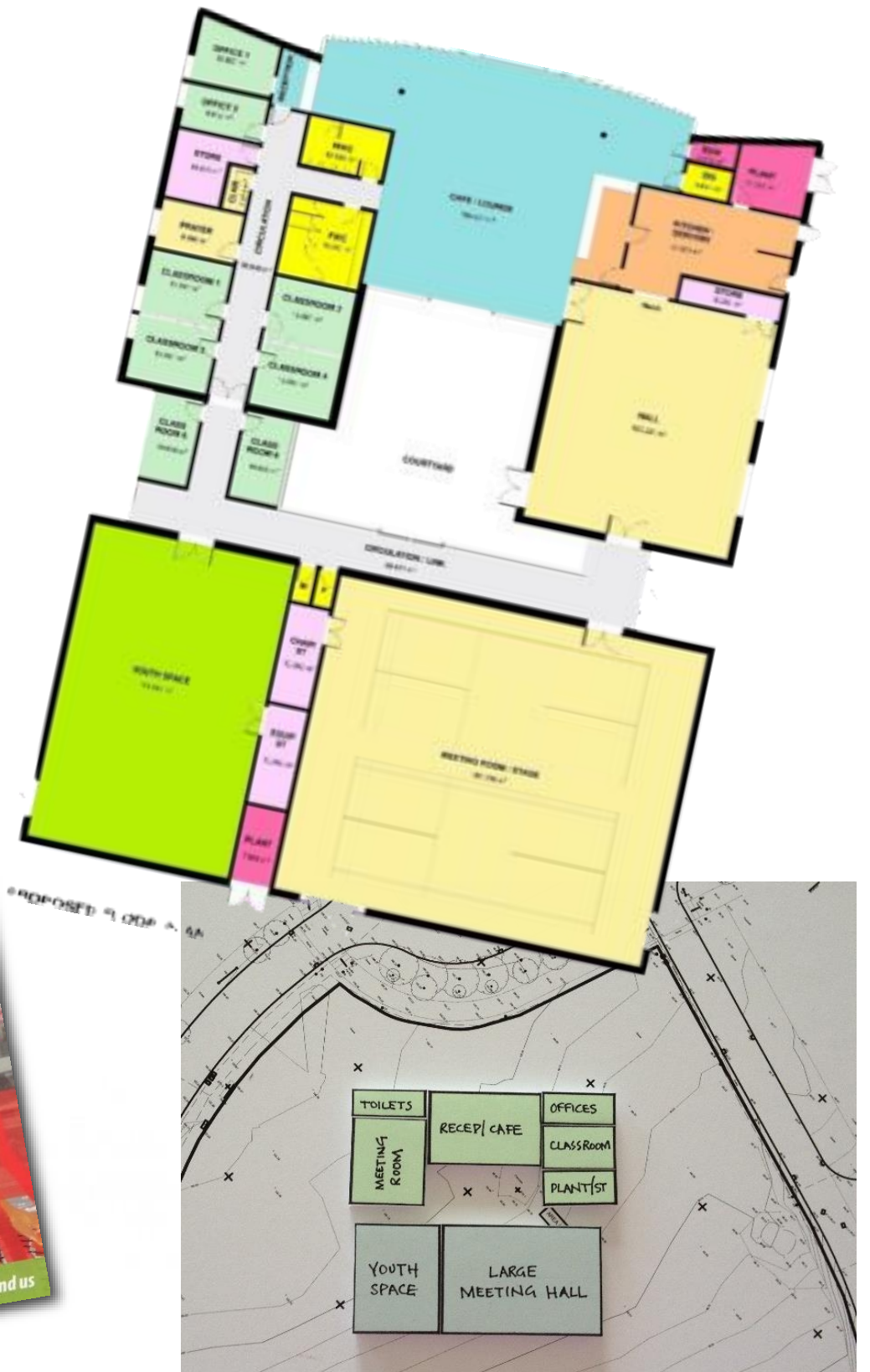
Church Building projects



Jim Hammett



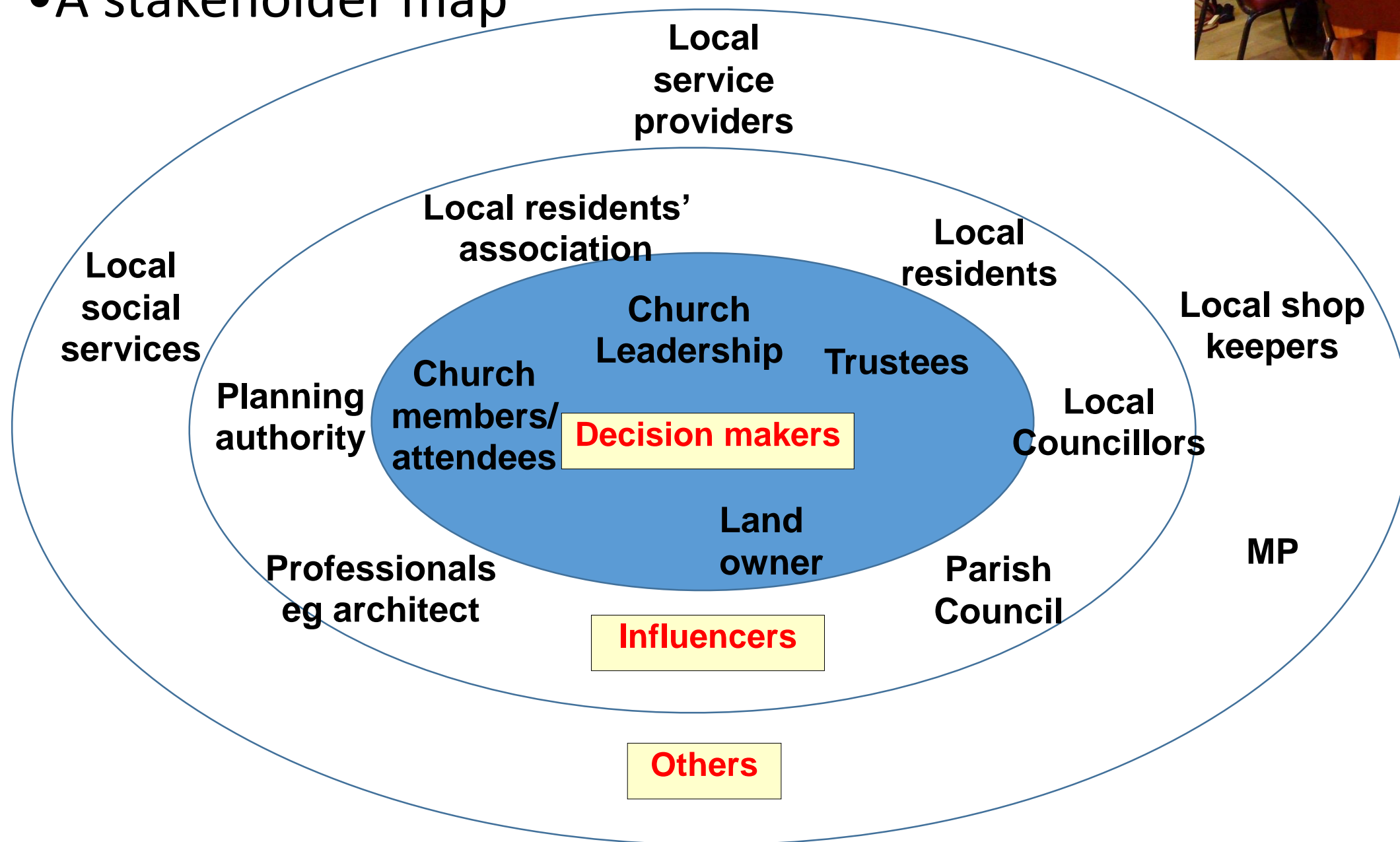
1. Who do you serve?
2. What's the vision?
3. How do I find the funds?



1. WHO DO YOU SERVE?

Who are they and what do they want?

- A stakeholder map



The community you serve

A COMMUNITY SURVEY

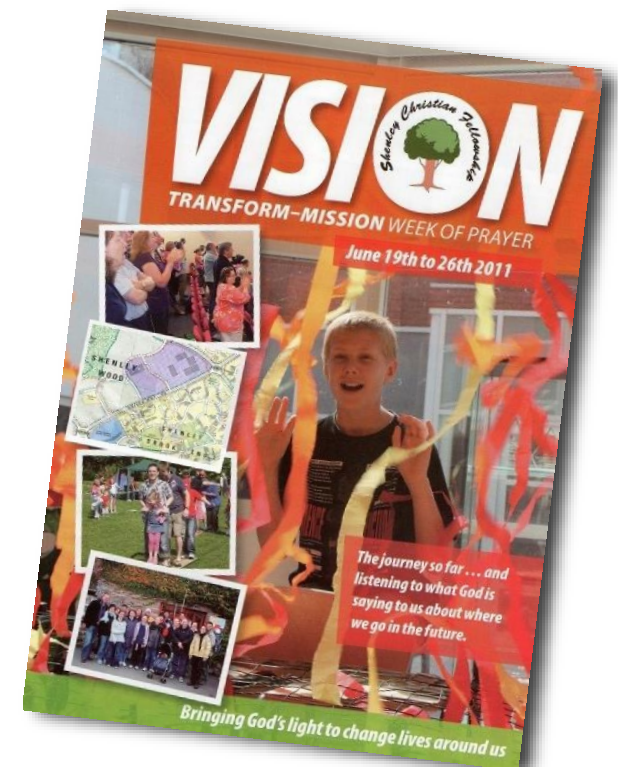
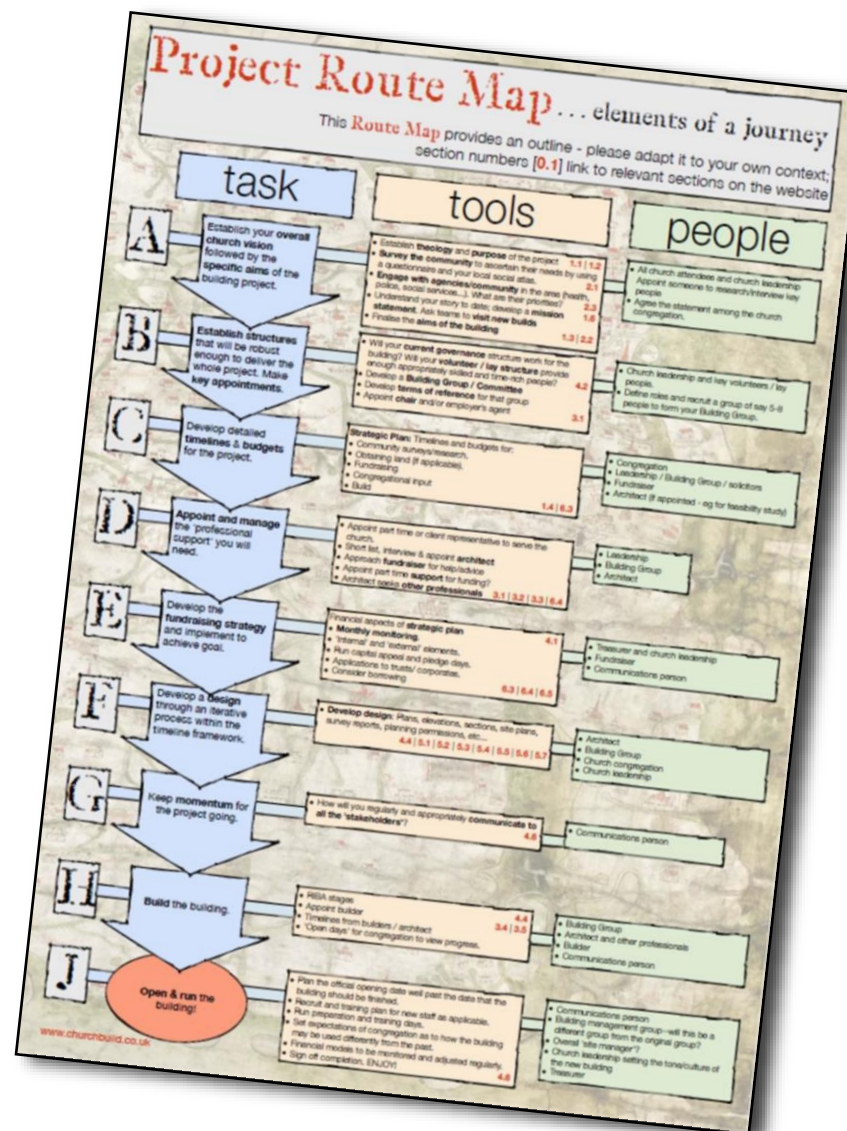


- Gain ownership
- Gain awareness of need
- Address internal needs



2. WHAT'S THE VISION?

- What are you wanting to achieve with a new building?
- Is the vision compelling?
- Taking your congregation on a spiritual journey?



What are you wanting to achieve?

What are the outcomes?

More space?

More contemporary outreach?

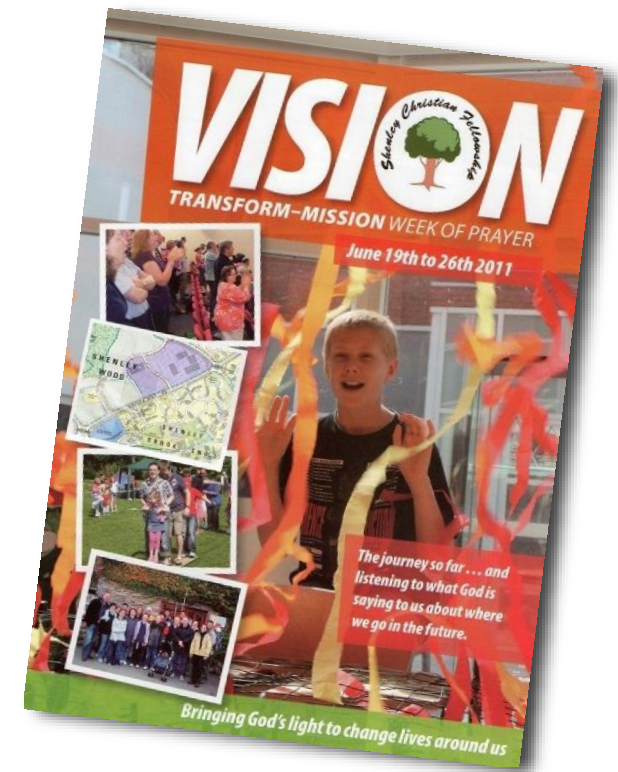
New church for a housing estate?

New ministries? Is there demand?



Is the vision compelling?

- It's not about bricks and mortar
- It's about transforming lives!
- Write it down and keep telling the story
- You will have to re-tell it over many years
- For both internal and external funders it needs to have a compelling strapline and clear mission statement:



Taking your congregation on the spiritual journey

- It is primarily about a spiritual journey!
- It combines faith and sacrifice.
- It is a one-time opportunity for witness, faith building, learning new truths about sacrificial giving, working as a team...
- It can make or break!
- It isn't for the faint hearted.



3. HOW DO I FIND THE FUNDS?

Church Build Project			Template for 5 year period - 3 years before build, one year build and one year after opening					
Summary Project CAPITAL & OPERATIONAL Budget			Alter this template to suit your own circumstances, adding lines and changing line names					
			INCOME:					Total:
Row	Code	Description	Year - 3	Year - 2	Year - 1	Build year	Year 1	
5		Capital Appeal						£0.00
6		Monthly donors						£0.00
7		Gift Aid reclaim						£0.00
8		Internal Events						£0.00
9		External Trusts						£0.00
10		External Corporates						£0.00
11		Gifts in Kind						£0.00
12		Bank interest						£0.00
13		Investment interest						£0.00
14		Ad Hoc events						£0.00
15		Loans						£0.00
16		Rental Income						£0.00
17		Sales Income						£0.00
18		Event Income						£0.00
19								£0.00
20								£0.00
21								£0.00
22								£0.00
			EXPENDITURE:					Total:
Row	Code	Description	Year - 3	Year - 2	Year - 1	Build year	Year 1	
23		Fundraising: Materials						£0.00
24		Fundraising: Advisor						£0.00
25		Fundraising: Travel						£0.00
26		Fundraising: Website						£0.00
27		Fundraising: Video						£0.00
28		Fundraising: Events						£0.00
29		Ad hoc events						£0.00
30		Land purchase						£0.00
31		Employer Agent						£0.00
32		Professional Fees						£0.00
33		Legal Fees						£0.00
34		Building costs						£0.00
35		Land Costs						£0.00
36		Fundraising Trust Applications						£0.00
37		Corporates						£0.00
38		BU Loan Repayment						£0.00
39		Internal Furnishing						£0.00
40		Catering						£0.00
41		Staff Costs						£0.00
42		Maintenance						£0.00
43		Utility Bills						£0.00
44		Insurance						£0.00
45								£0.00
46								£0.00
47								£0.00
48								£0.00

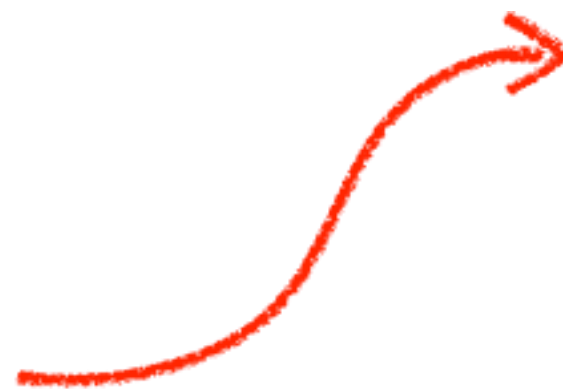


Finding the funds

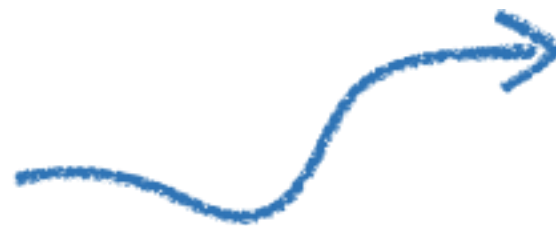


3 elements :

- Internal fundraising
- External fundraising
- Loan elements



Capital gift days
Monthly giving
Internal Events
'Give as You Live' style income



Individual initiatives – sponsored
Community events
Trust applications & Landfill
Statutory bodies
Funding bodies



BU
BBF
Commercial/charity bank
Congregational loans



Sacrificial giving



- You will need to raise/donate approx. 70-80% as a congregation.
- Will it transform the people as it did in Nehemiah's day?
- Is God more interested in the faith journey than the build?



www.churchbuildingprojects.org.uk



Need more help?



www.christianconsulting.org.uk

VISIT OUR STAND



Q&A...

