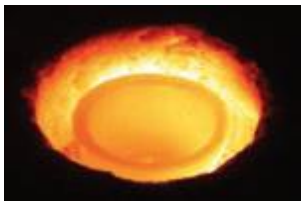




What is a Crucible?

1. A melting pot, where antiquated structures are made pliable and reshaped.
2. A time when powerful political, social, intellectual or economic forces converge.
3. A place where different cultures or styles can mix together and produce something new.



Who is the Course for?

Christians across western culture are facing profound challenges and fresh opportunities. The long era of ‘Christendom’ is coming to an end. We now live in a plural society, with multiple religious options alongside the prevailing secular assumptions, in which Christianity has lost its position of dominance and privilege and churches are on the margins of society. Although we seem to be declining in numbers and influence, this context offers many new possibilities – if we have the courage and imagination to grasp them.

Crucible is for Christians with courage and imagination, who suspect that:

- We need to operate as cross-cultural missionaries because we live in a cross-cultural mission context.
- We need to think creatively about incarnating the gospel and planting new kinds of churches in emerging and diverse cultures.
- We need to recover the biblical vision of *shalom* and reflect on how we live as followers of Jesus in light of this all-embracing vision.
- We need to pay particular attention to the margins, because we serve the God who frequently does new things there:
 - On the margins of society among the poor and disenfranchised.

- At the margins of culture, where creative thinking explores new possibilities.
- On the margins of the familiar, the spaces all around us, neglected or ignored, but full of potential.

What is taught?

After Christendom investigates the many opportunities, as well as the challenges, that the end of imperial Christianity presents.

On the Edge examines the dynamics of mission and ministry in marginal urban and rural communities and offers biblical and practical insights.

Church Unplugged presents the challenge of pioneering creative and contextual forms of Christian community and explores the processes involved.

Crucible London

Venue: Spurgeon's College, 189 South Norwood Hill, London SE25 6DJ.

Dates: 10 November, 8 December, 9 February, 9 March, 11 May, 8 June

Cost: £46 per day.

Food and accommodation: lunch can be purchased from the college; bed & breakfast (if required): £25 per person.

Crucible Exeter

Venue: South Street Baptist Church, 25 South Street, Exeter EX1 1EB.

Dates: 20 October, 3 November, 2 February, 16 February, 27 April, 18 May

Cost: £46 per day.

Food and accommodation: several options nearby.

Each module runs over two Saturdays in the autumn, spring or summer from 10.00 to 4.00.

Partners

Crucible is run by Urban Expression (www.urbanexpression.org.uk) and the Incarnate Network (www.incarnate-network.eu), in association with the Northumbria Community, Workshop, BMS World Mission, Rural Ministries and others.

Equipped to Pioneer

Baptists seeking recognition as pioneers via the 'Equipped to Pioneer' track can combine modules from the Crucible course with modules taught at the Baptist colleges, together with a supervised placement. There are written assignments for each module. Further information can be found at https://www.baptist.org.uk/Articles/368851/Equipped_to_Pioneer.aspx

Further Information

For further information or to book a place on the course, go to www.cruciblecourse.org.uk or contact Rachel Jay: rachel@urbanexpression.org.uk